

2018 Traffic Unit Annual Report



Crash Analysis Report

Prepared by:

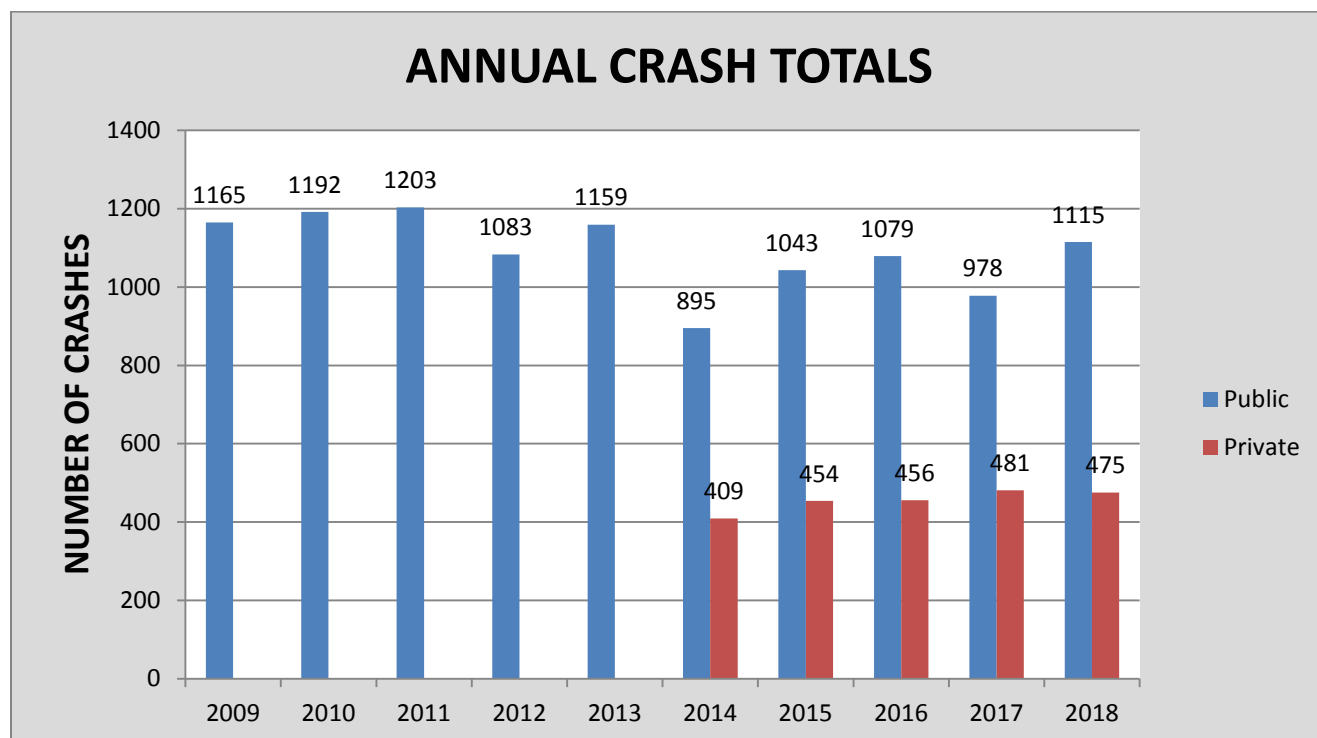
Crime Free Multi-Housing Assistant Lieberenz

Submitted by:

Sgt. Dennis Kotlinski

Traffic Crash Analysis

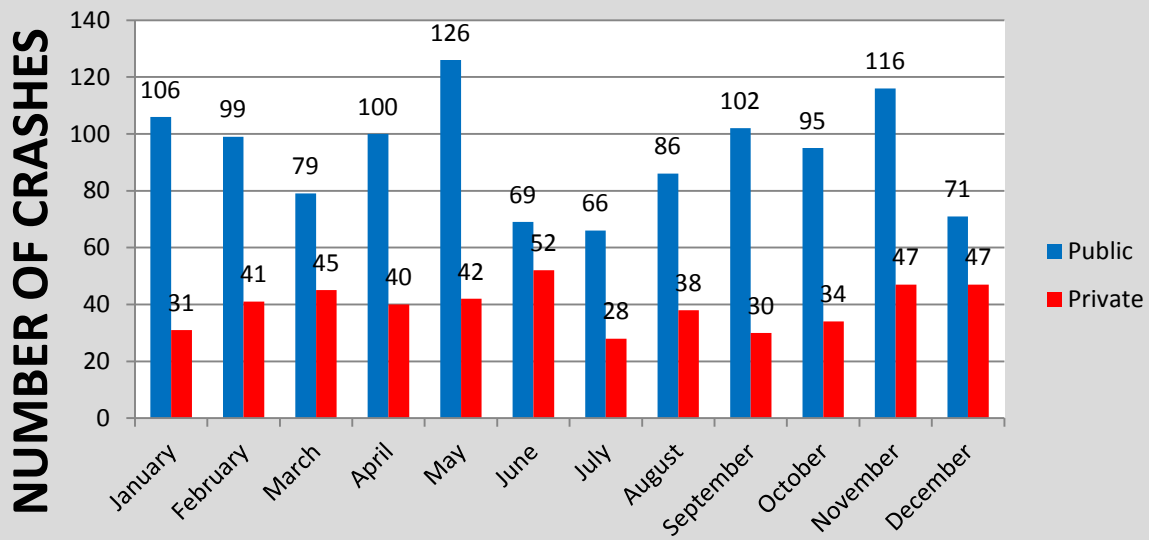
The following is a statistical examination of traffic crashes investigated by the Addison Police Department in 2018.



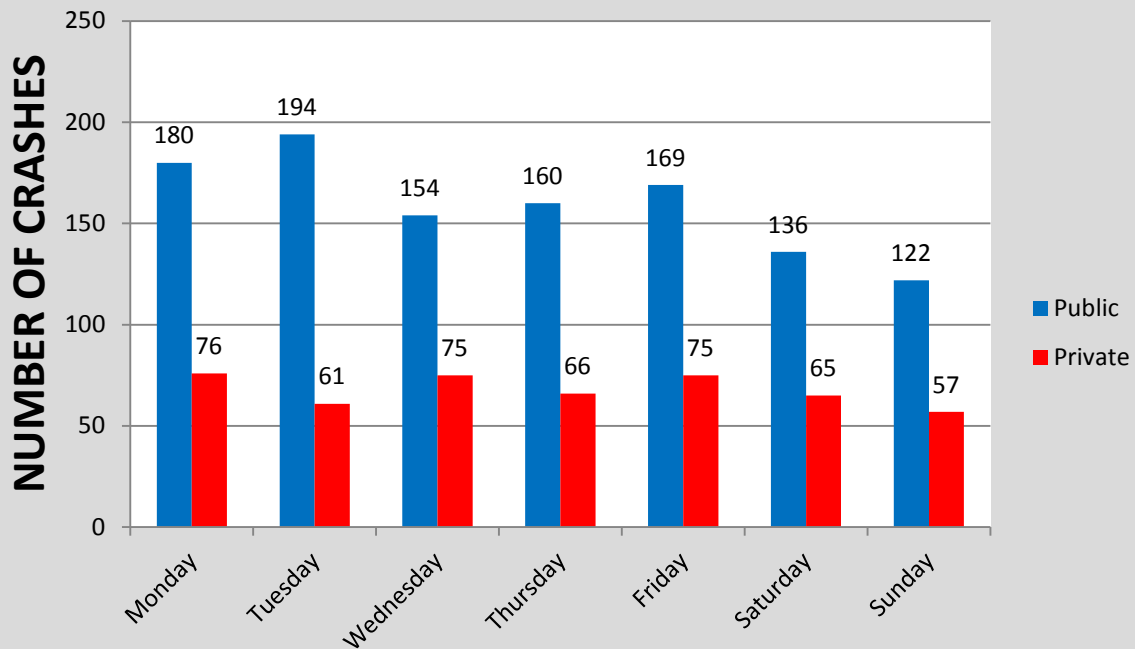
Comparison of Top 7 Crash Intersections 2014 to 2018

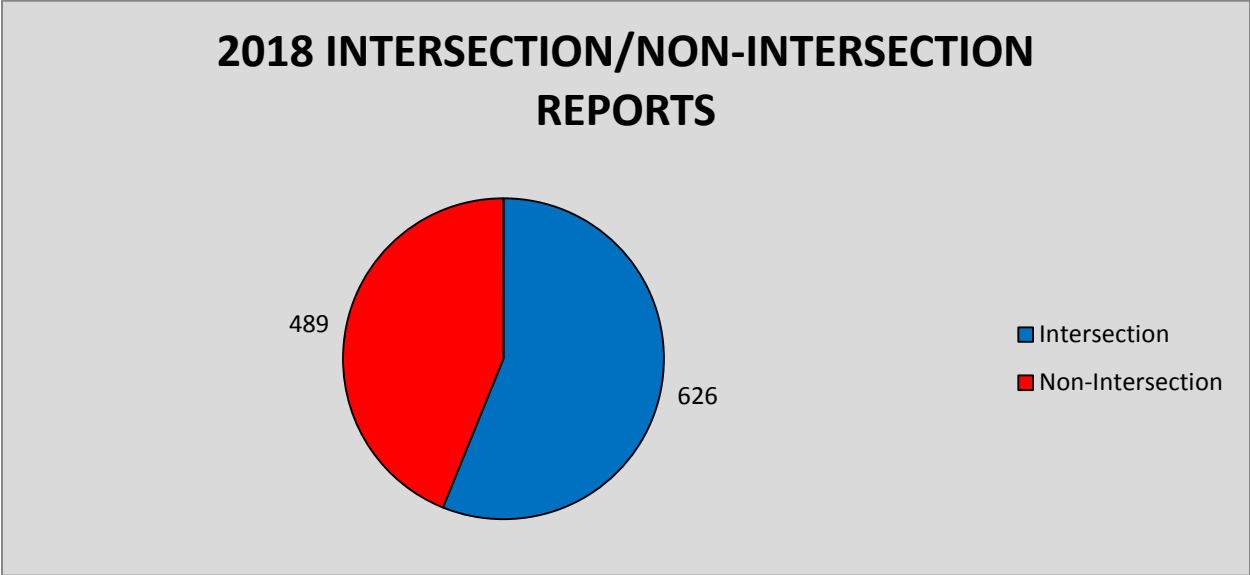
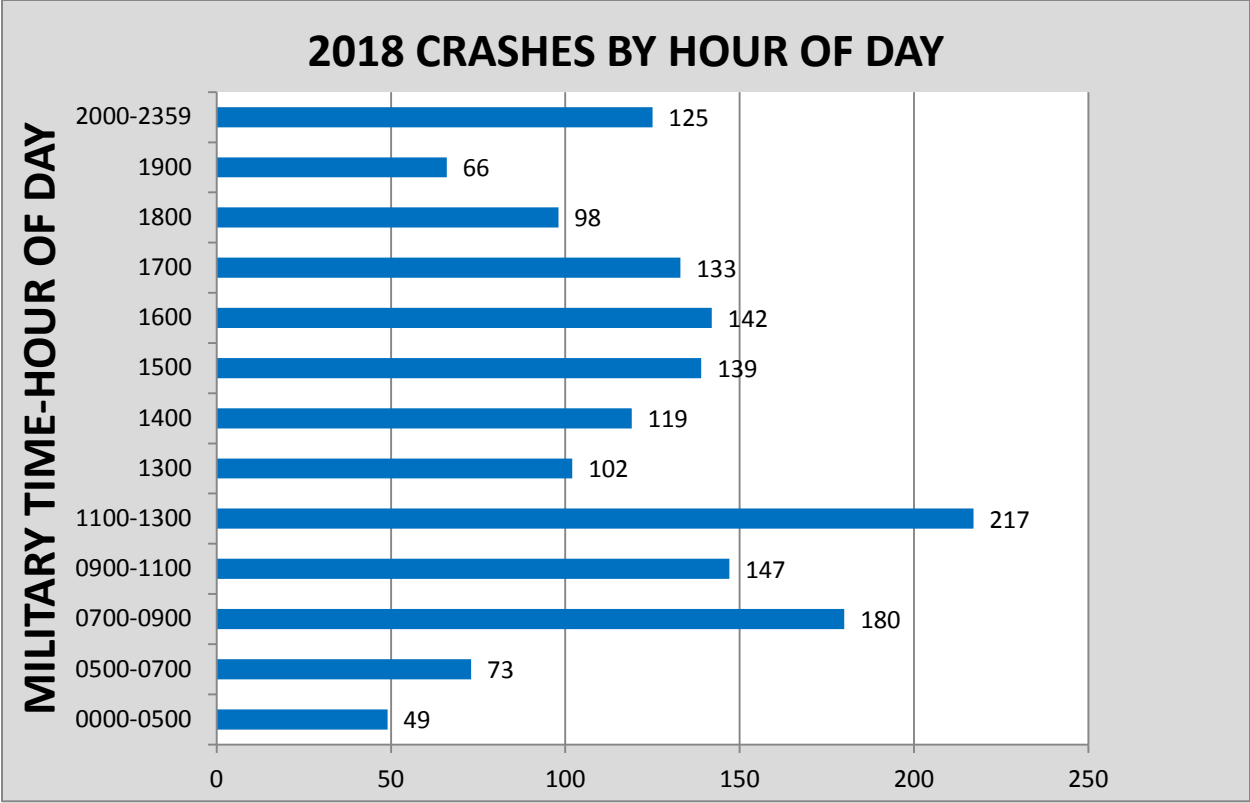
| Intersection | 2018 | 2017 | 2016 | 2015 | 2014 | +/- Percent Change from 2017 to 2018 |
|----------------------------|------|------|------|------|------|--------------------------------------|
| Lake Street & I-355 | 30 | 31 | 39 | 26 | 43 | -3% |
| Lake Street & IL-53 | 43 | 39 | 22 | 29 | 25 | +9% |
| Lake Street & JF Kennedy | 22 | 20 | 35 | 28 | 24 | +9% |
| Lake Street & Villa Avenue | 25 | 17 | 16 | 16 | 21 | +32% |
| Army Trail & IL-53 | 22 | 16 | 24 | 12 | 19 | +27% |
| Lake Street & Addison Road | 49 | 13 | 42 | 34 | 18 | +73% |
| Army Trail & Swift Road | 37 | 12 | 25 | 34 | 16 | +68% |

2018 CRASHES BY MONTH

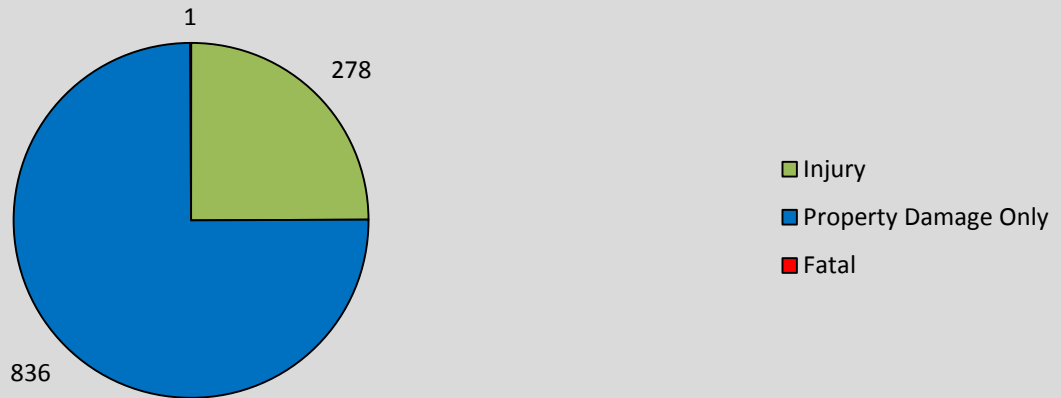


2018 CRASHES BY DAY OF WEEK

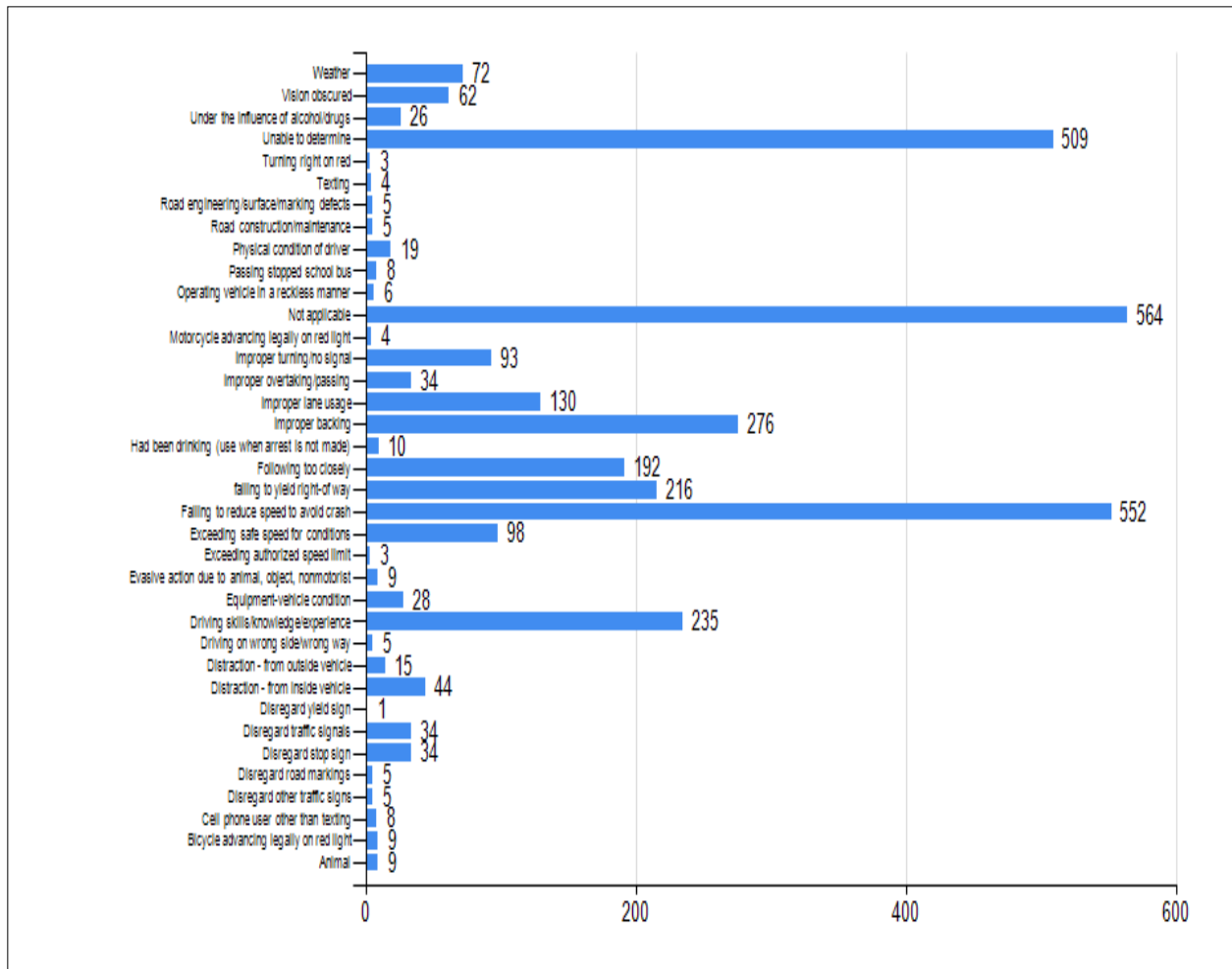




2018 TYPE OF CRASH REPORTS



2018 CAUSATION/CONTRIBUTING FACTORS



Traffic Crash Analysis

A statistical analysis of the data shown on the above graphs reveals the following:

- In 2018, there were a total of 475 private property crashes. All private property crashes are completed using the IyeTek reporting system.
- The Department experienced an increase in the total number of crashes on public property in 2018, with a total of 1115 crashes. That number equated to an increase of approximately 12%.
- There was one fatal crash in 2018.
- In 2018, injuries were reported in approximately 25% of the total reported crashes, which is a decrease of approximately 30% from 2017.
- May and November 2018 had the highest number of reported crashes on public property. There were 4 months with fewer than 80 crashes for the month on public property. For the year, there was an average of 93 crash reports each month on public property.
- Looking at the days of the week, Tuesdays produced the largest number of crashes on public property in 2018, with 194. The Department handled the least amount of crashes on public property on Sundays, with only 122.
- As for time of day, 1100 - 1300 hours had the highest amount of crashes, followed by 0700 - 0900 hours.
- Regarding the top 7 intersection-related vehicle crashes, Lake Street and Addison Road was the leading intersection for crashes, with a total of 49 crashes. The leading intersection last year was Lake Street and Rohlwing Road.
- Regarding causation/contributing factors, a significant amount of crashes, 552, were for Failure to Reduce Speed to Avoid an Accident, 276 were for Improper Backing, and 216 were for Failure to Yield Right of Way.
- In 2018, there were a total of 292 hit and run reports completed on public and private property.
- In 2018, there were a total of 358 vehicles towed from crash scenes on public and private property.

The top violations cited while handling crashes are:

- The predominant violation was “Failure to Reduce Speed to Avoid an Accident/Driving Too Fast for Conditions” (11-601A), which is typical when one vehicle strikes another from behind. Officers wrote 377 citations for that violation.
- The next most common violation was “Operation of Uninsured Motor Vehicle” (3-707). Officers wrote 102 citations during crash investigations. Many of those citations were dismissed in court upon the violator providing proof of insurance.
- Officers arrested 34 drivers for not having a valid driver’s license (6-101) and 25 drivers for driving with either a suspended or revoked driver’s license (6-303) at the time of the crash.

Evaluation

What does all of this mean? An evaluation of the above data, special enforcement activities, public education, and community involvements indicate the following:

- The Department was responsive to complaints by the public and has taken appropriate enforcement action where needed. For every complaint received, an action was taken. There were a variety of procedures used to respond to complaints and concerns. Included among them were special enforcement details, deployment of SMART trailers, public education, and special watch initiatives.
- All members of the Department are made aware of statistics regarding the intersections where crashes occur through posting of the annual report. Officers are directed to those locations for enforcement and visibility.
- There was approximately an 8% increase in the number of crash reports completed since last year.