

2008 Traffic Unit Annual Report

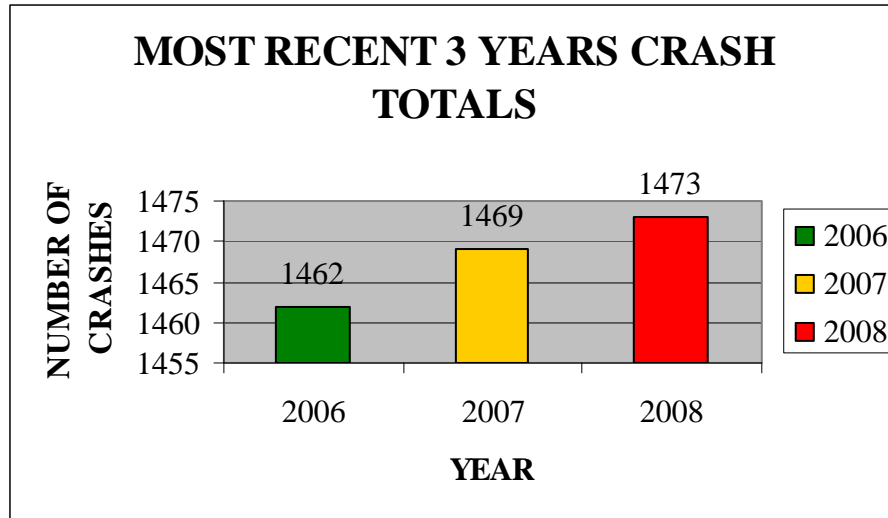


Crash Analysis Report

**Prepared by:
Sergeant Mike Tierney**

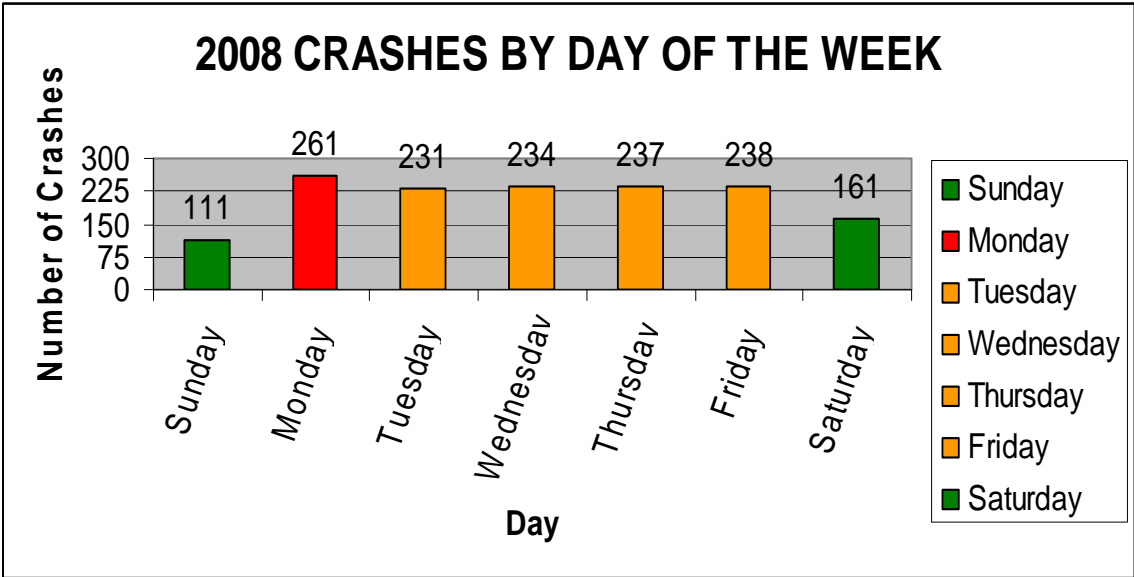
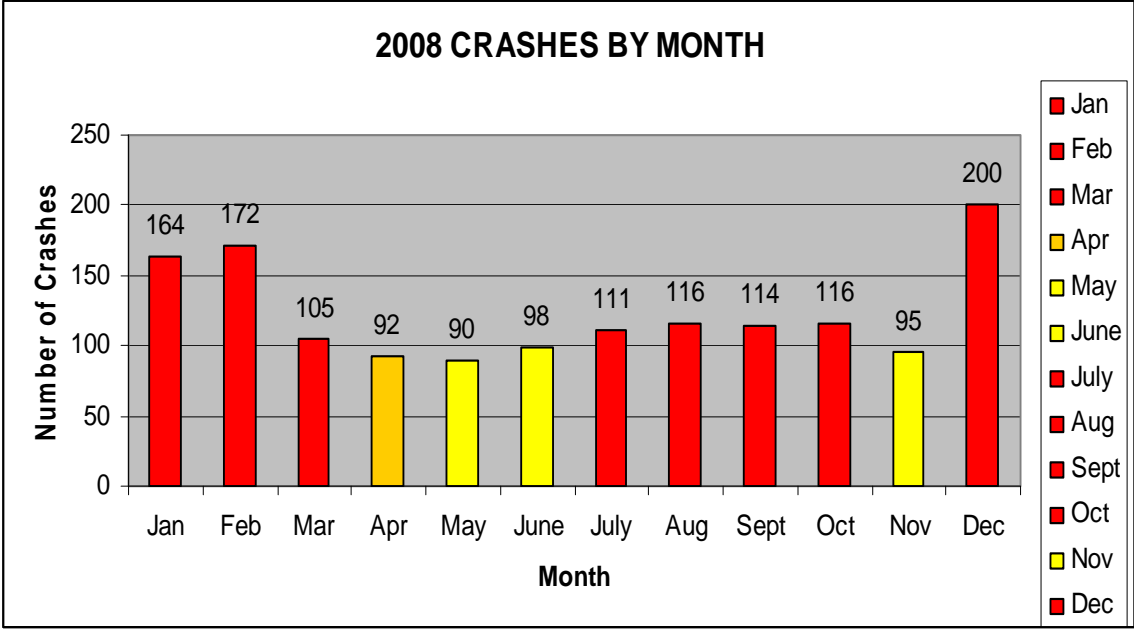
Traffic Crash Analysis

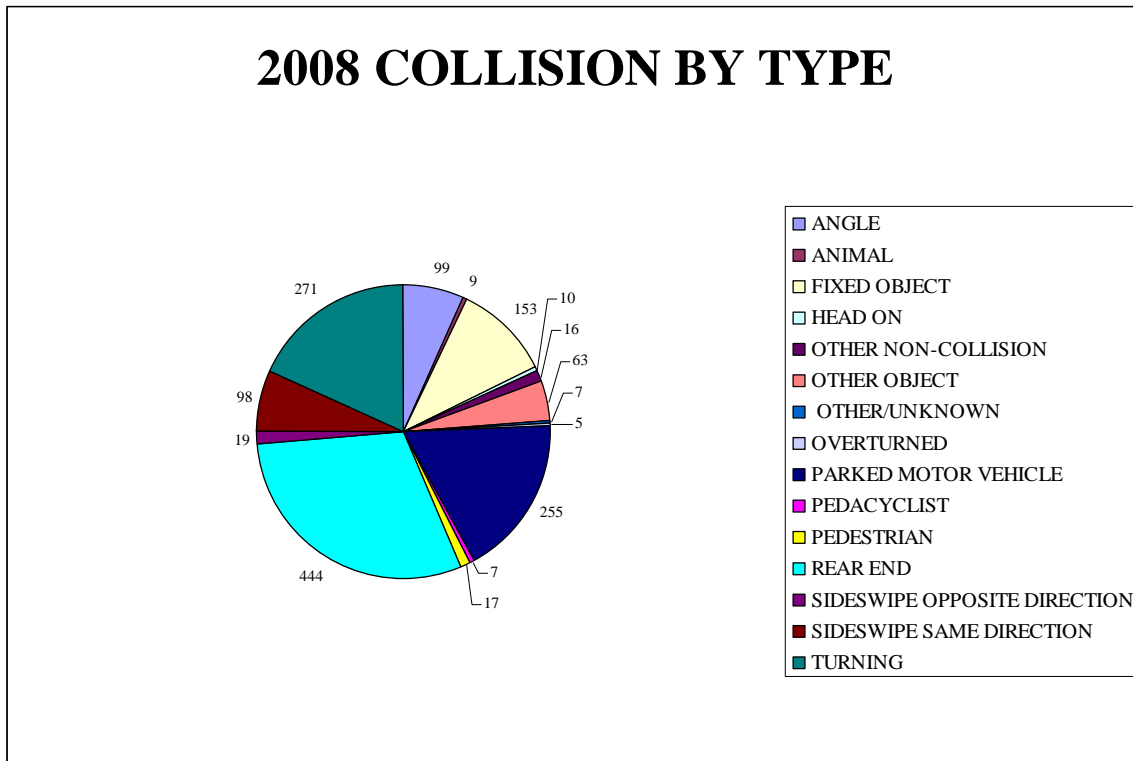
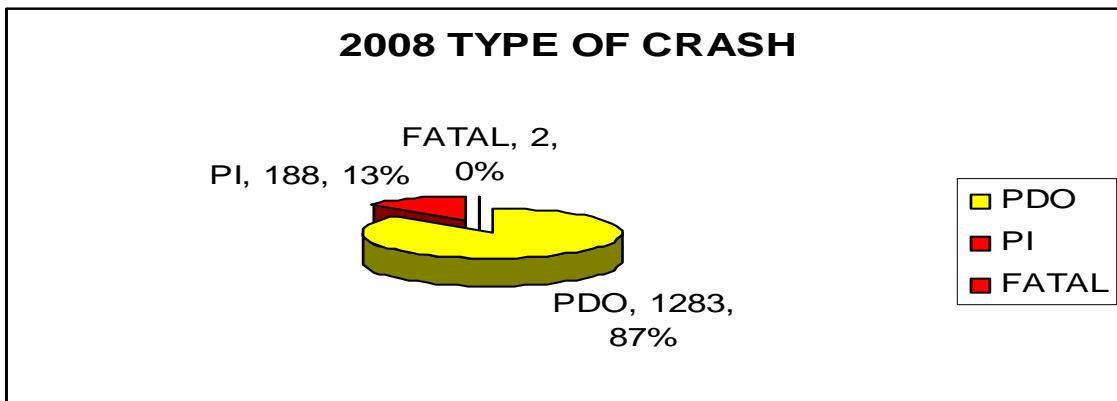
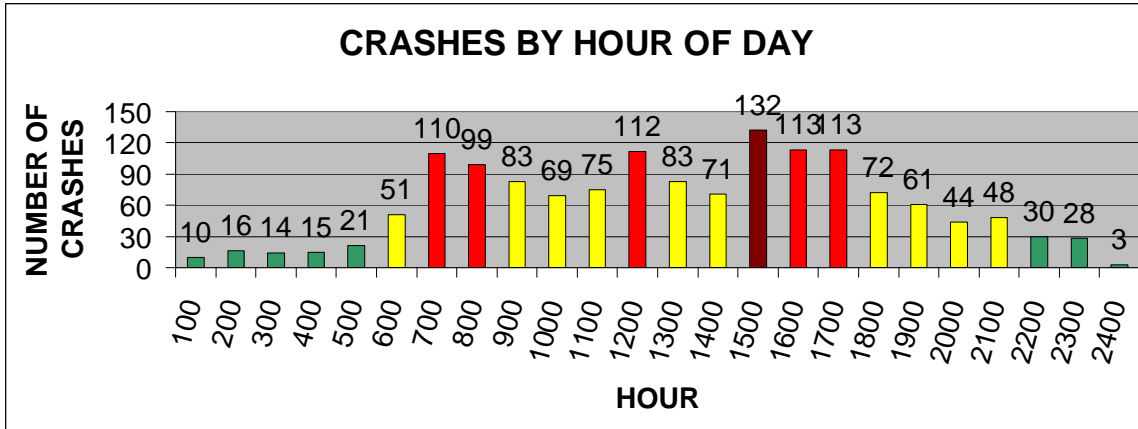
The following is a statistical examination of traffic crashes investigated by the Addison Police Department in 2008.



Comparison of Top 17 Crash Intersections 2006 to 2008

<u>Intersection</u>	<u>2008</u>	<u>2007</u>	<u>2006</u>	<u>+/- Percent Change from 2007</u>
Lake Street & JF Kennedy	51	72	44	-29%
Lake Street & Addison Road	39	45	34	-13%
IL-53 & Fullerton	31	15	N/A	+107%
IL-53 & Army Trail	30	28	26	+7%
Lake Street & Swift Road	27	20	21	+35%
IL-53 @ 1050 North	26	5	N/A	+420%
Army Trail & Swift Road	26	37	39	-30%
Lake Street & IL-53	22	24	N/A	-8%
Lake Street & Villa Avenue	18	31	N/A	-42%
Army Trail & Lombard Road	15	20	15	-25%
Army Trail & Mill Road	15	16	16	-6%
Lake Street & Mill Road	13	24	28	-46%
Lake Street & Greenbriar	13	12	17	+8%
Lake Street & Chestnut	13	8	UNK	+62.5%
Addison Road & Fullerton	11	29	19	-62%
Lake Street (E/B) & I-355	10	21	37	-52%
Lake Street & Lombard	10	15	N/A	-33%





Traffic Crash Analysis

A statistical analysis of the data shown on the above graphs reveals the following:

- We experienced a very minor increase in total crashes in 2008, with a total of 1473 compared to a total of 1469 crashes in 2007.
- There were 2 fatal crashes in 2008, and there were 2 fatal crashes in 2007 and 2006.
- In 2008 injuries were reported in 13% of the total reported crashes. In 2007, 14% of the crashes involved personal injury.
- December 2008 had a significantly higher amount of crashes than the rest. There were 200 crashes reported that month. December 2008 had three significant snow/ice events accounting for 35% of the month's crashes on only three days. April, May, June and November 2008 were the only months with less than 100 crashes. On average there were 123 crashes per month.
- Looking at the day of the week, Mondays produced the largest number of crashes with 261 occurring then. The Department handled the least amount of crashes on Sundays, with only 111 occurring.
- As for time of day, the afternoon hours typically experienced the most crashes, with the hours of 3:00 pm to 6:00 pm being the most active, followed by 12:00 pm to 1:00 pm then 7:00 am to 9:00 am. The levels fall off significantly after 10:00 pm. This pattern has been consistent for three years, with the afternoon hours more active, followed by the noon hour and then early morning.
- Regarding causation factors, a significant amount of crashes (29%) were rear end collisions. 11% involved parked vehicles, 16% were angle collisions, 15% involved turning, and 10% involved fixed objects. These numbers took a significant drop from last year.
- Regarding the top 15 locations for vehicle crashes, Lake Street and JF Kennedy Drive was again the leading intersection for our crashes, with an increase of 64%, (72 crashes). Lake Street at Addison Road overtook Army Trail and Swift Road, the number two intersection for crashes. Army Trail and Swift Roads saw a decline of 5% in crashes in 2007. Addison Road and Fullerton saw another significant increase in the number of crashes, up 53 %.
- The top five violations for our top fifteen crash locations reveals the following information:
 - The predominant violation was "Failure to Reduce Speed to Avoid an Accident/Driving Too Fast for Conditions" (11-601A), which is typical when one vehicle strikes another from behind.
 - The next most common violation was Failure to Yield Turning Left (11-902).
 - That was followed by Improper Lane Usage (11-709).
 - Which was followed by Improper Backing (11-1402) and lastly
 - Failure to Yield Exiting a Private Drive (11-906)

2008 Traffic Enforcement Statistics

An analysis of the day-to-day enforcement activity of the Traffic Unit consisting of Officers Bauer, DiFatta, Kopec, Nisbet, Weinbrenner and Zajdel revealed the following:

- The unit issued 3,729 traffic tickets, including crash investigation tickets. That compared to 1,935 in 2007.
- The unit issued 597 warning tickets. That compared to 389 in 2007.
- The unit made 493 misdemeanor traffic arrests (Driving while License Suspended/Revoked & misdemeanors other than DUI and Hit & Run). That compared to 204 in 2007.
- The unit made 187 warrant arrests. That compared to 87 in 2007.
- The unit had 122 criminal felony and misdemeanor charges in 2008. The unit had 88 similar cases in 2007.
- In 2008 the unit made 144 arrests for DUI. In 2007 the unit made 88 DUI arrests.
- There were 187 citations written for overweight vehicles in 2008 and 87 in 2007.

Evaluation

What does this all mean? An evaluation of all of the above data, special enforcement activities, public education and community involvements indicate the following:

- The Department was responsive to complaints by the public and have taken appropriate enforcement action where needed. For every complaint received, an action was taken. There were a variety of procedures to respond to complaints and concerns. Included among them were: special enforcement details, deployment of SMART trailers, public education, special watch initiatives and Problem Oriented Policing projects.
- There was an increase in the number of traffic citations issued.
- There was a minor increase in the number of crash reports completed. It appears severe weather in December 2008 was the cause of the increase.

All members of the Department are aware of statistics regarding the intersections where crashes occur. Officers are directed to those locations for enforcement and visibility.